

“REGAL EAGLE”

Designed by Debby Kratovil

Featuring The Farmer Fancy Collection in

Association with the National Museum of the American Coverlet

Size: 45” x 45”



WINDHAM FABRICS

812 Jersey Ave ~ Jersey City, NJ 07310 ~ 201.659.0444 ~ FAX: 201.659.9719
www.windhamfabrics.com email: retail@windhamfabrics.com

“REGAL EAGLE”

Designed by Debby Kratovil
Featuring The Farmer Fancy Collection in
Association with the National Museum of the American Coverlet
Size: 45” x 45”
Block Size (background blocks for eagle): 6”
Eagle block: 24”

Fabric Requirements

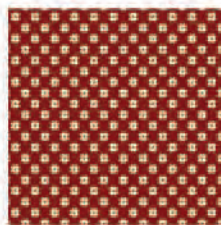
1/3 yard: 31905-6 Cream (background for eagle)
1/3 yard: 31907-6 Cream (background for eagle)
1/4 yard: 31902-3 Cream (small triangles)
5/8 yard: 31901-2 Red (small triangles and inner border)
1/8 yard: 31905-1 Blue (Stars)
1 yard: 31906-1 Blue (eagle - 18” x 16” piece); triangles are cut from remainder
1/3 yard: 31900-1 Blue (for squares of lion print in border)
1-1/8 yards 31909-1 Blue (border)
3/8 yard 31901-1 Blue (binding)
3/4 yd lightweight fusible web
template material
thread for appliqué
1-3/4 yd for backing
50” square of batting



31905-6



31907-6



31901-2



31906-1



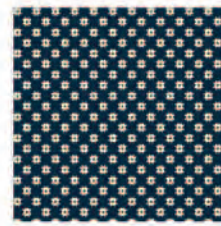
31905-1



31901-2



31900-1



31901-1



31909-1

Cutting & Sewing for the Eagle and background:

1. From 31905-6 Cream cut four strips 2-1/2” x wof and from 31907-6 Cream cut five strips 2-1/2” x wof. Alternate strips and sew together into a 3 strip band. Press seams open. Repeat, making two more 3-strip bands. Press.



WINDHAM FABRICS

“REGAL EAGLE”

Page 2

2. Cut the 3-strip bands into $2\frac{1}{2}$ " x $6\frac{1}{2}$ " wedges as shown in Diagram 1. Cut enough from the three sets to yield forty-eight wedges.

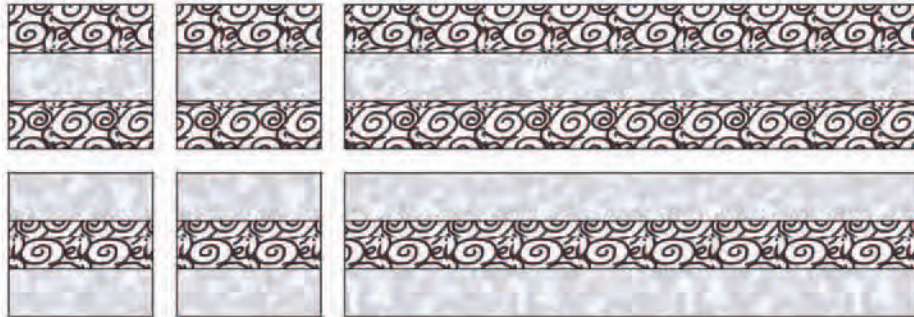


Diagram 1

3. Piece the 16 Rail Fence units together to form the eagle background (see Diagram 2), measuring $24\frac{1}{2}$ " x $24\frac{1}{2}$ ".



Diagram 2 - Rail Fence Block

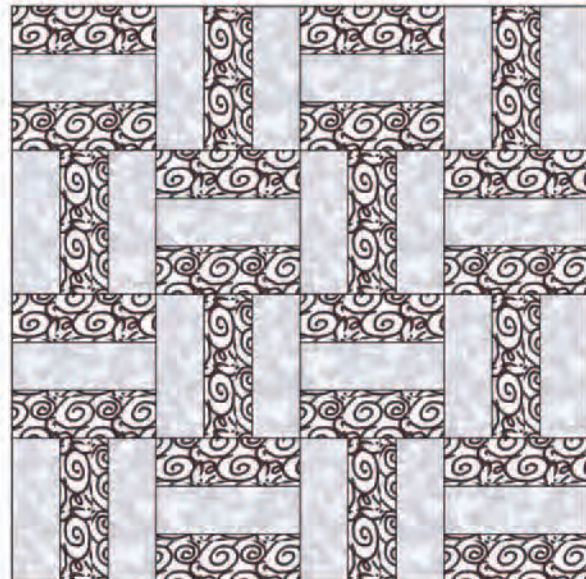


Diagram 3 - Eagle Background

4. Transfer full size template markings to one piece of template material (card stock, freezer paper, etc). Cut a 16" x 18" fabric piece from 31906-1 blue and fuse the wrong side with the fusible web. Allow to cool and leave paper on. Use the eagle template and transfer markings to the FRONT of the fabric and cut out. Peel away the paper on the back side of eagle shape and center on the cream pieced background square. Fuse in place.
5. Transfer markings for stars to template material. Cut out enough $3\frac{1}{2}$ " squares of 31905-1 Blue for the number of stars you wish to use. Fuse wrong side with fusible webbing. Cut out stars using template. Peel away paper backing and arrange around the eagle as desired. Fuse in place.
6. Using a sewing machine stitch and matching thread, appliqué the eagle and stars. (I used a simple zigzag stitch).



WINDHAM FABRICS

“REGAL EAGLE”

Page 3

Cutting and Sewing for Triangle borders:

1. From 31901-2 Red cut 16 squares $3\text{-}7/8"$ x $3\text{-}7/8"$ and from 31902-2 Cream cut 12 squares $3\text{-}7/8"$ x $3\text{-}7/8"$. Cut each once along the diagonal and use to piece the units as shown in Diagram 4. Make four of Unit 1 and four of Unit 2.



Unit 1
Make 4

Unit 2
Make 4

Diagram 4

2. Sew a Unit 1 and Unit 2 together as shown. Make four sets. Sew these to each of the four sides of the eagle center (see Assembly Diagram). Press well.



Assembly Diagram



WINDHAM FABRICS

“REGAL EAGLE”

Page 4

3. From 31906-1 Blue cut two squares 13-5/8" x 13-5/8" (same fabric as the eagle). Cut each into two triangles. Sew one triangle to each of the four corners of the pieced center (see Assembly Diagram). Quilt center now measures 34-1/2" x 34-1/2".

Borders

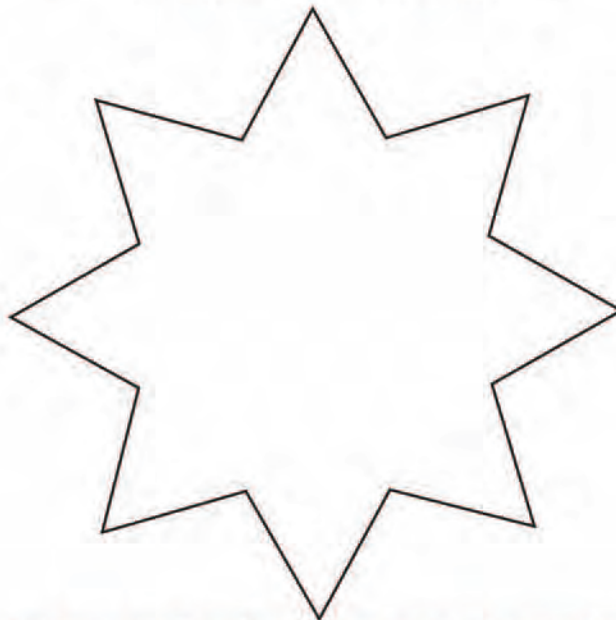
Refer to color picture of quilt for fabric placement.

1. From 31901-2 Red cut two strips 1-1/2" x 34-1/2" and two strips 1-1/2" x 36-1/2". Sew the shorter strips to the top and bottom of the quilt center. Press seams toward the red borders. Sew the longer strips to the quilt sides. Press.
2. From 31900-1 Blue cut four 7-1/2" squares, centering a lion in each. These are the four border squares.
3. From 31909-1 Blue cut four 7-1/2 x 36-1/2" strips for the outer borders. Sew a strip to both sides of the quilt center. Press seams. Sew a lion square to each short end of the remaining two strips and sew to quilt top and bottom. Press.
4. Layer backing, batting and quilt top together, baste and quilt as desired. Trim batting and backing even with quilt top.
5. Cut five binding strips 2-1/4" x wof from 31901-1 Blue. Seam together into one long strip and bind the quilt.

ENJOY!

To learn more about Debby Kratovil visit:
www.quilterbydesign.com

Star Template



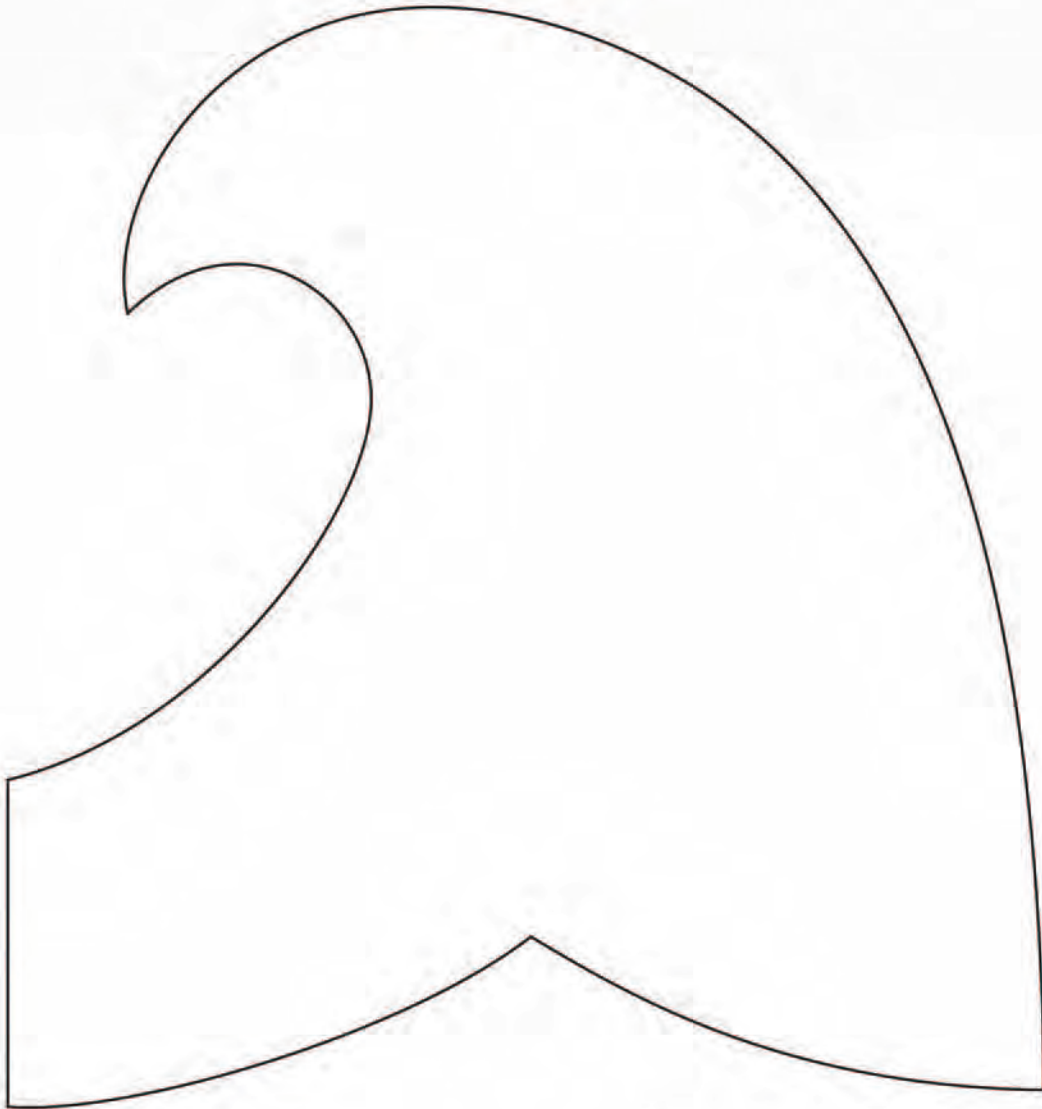
Be sure to visit www.windhamfabrics.com to see the complete collection
and to download this and other Free Projects



WINDHAM FABRICS

“REGAL EAGLE”

Eagle Template 1
Head - CUT 1

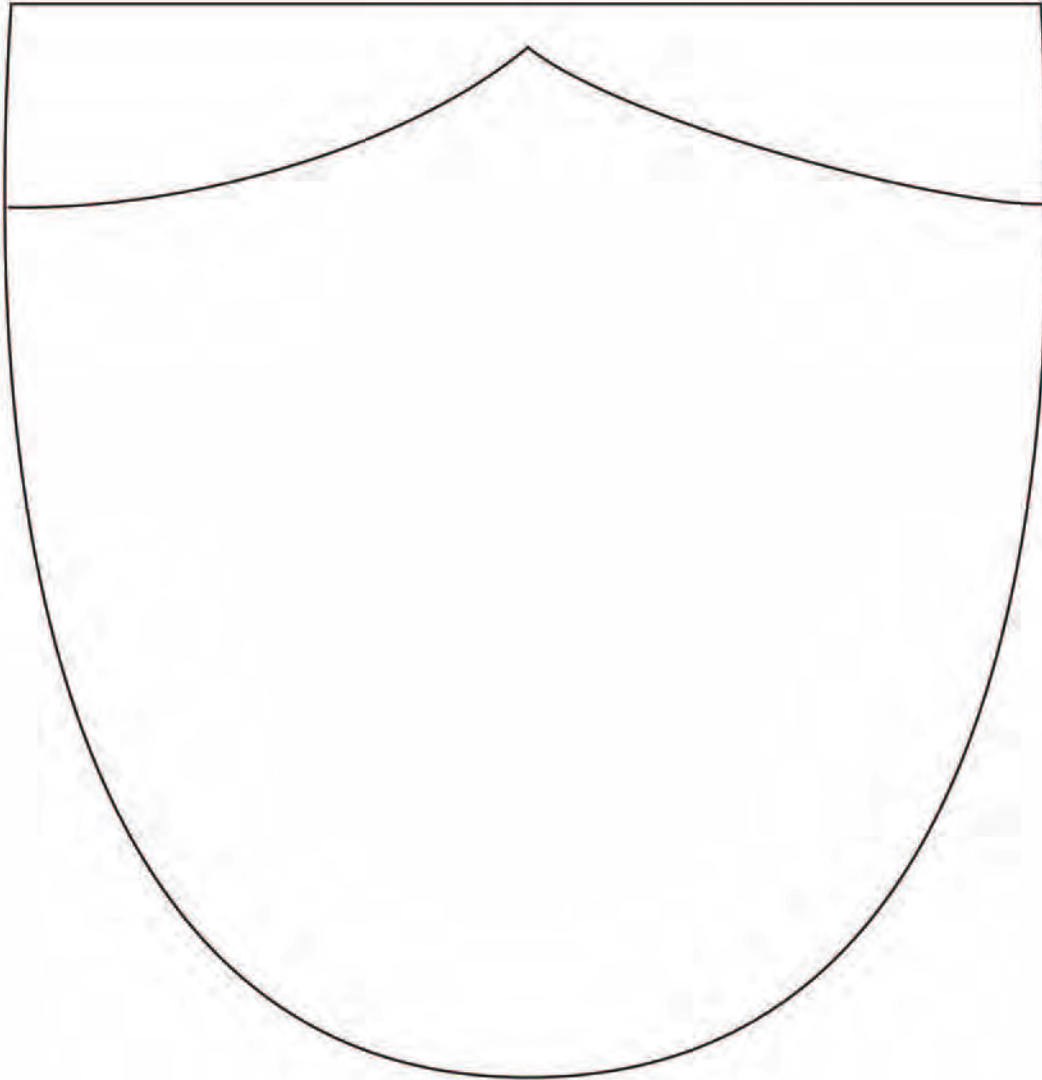


Leg
CUT 1 as is
and CUT 1 as
Mirror image



“REGAL EAGLE”

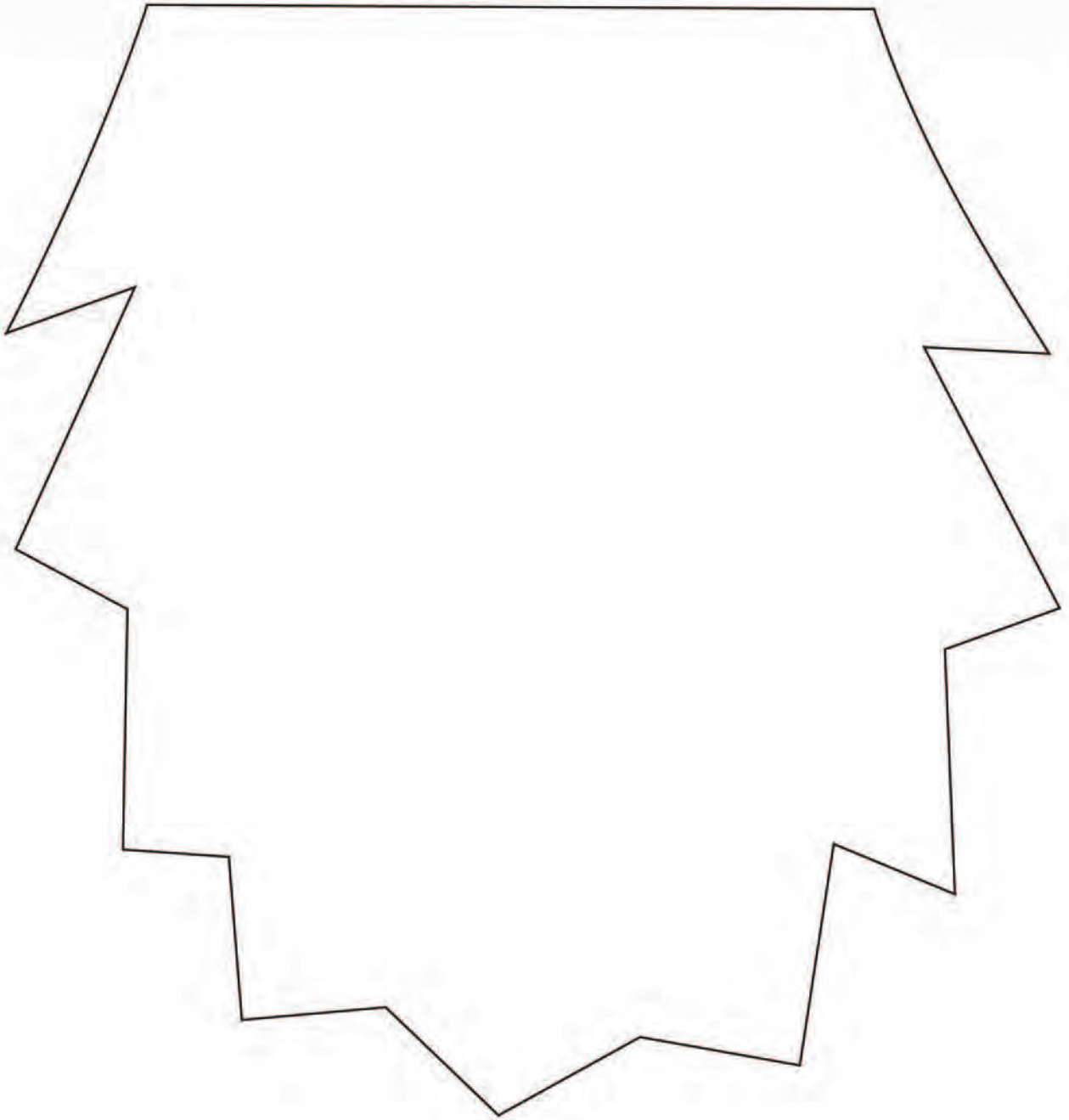
Eagle Template 1
Body
CUT 1



WINDHAM *W* FABRICS

“REGAL EAGLE”

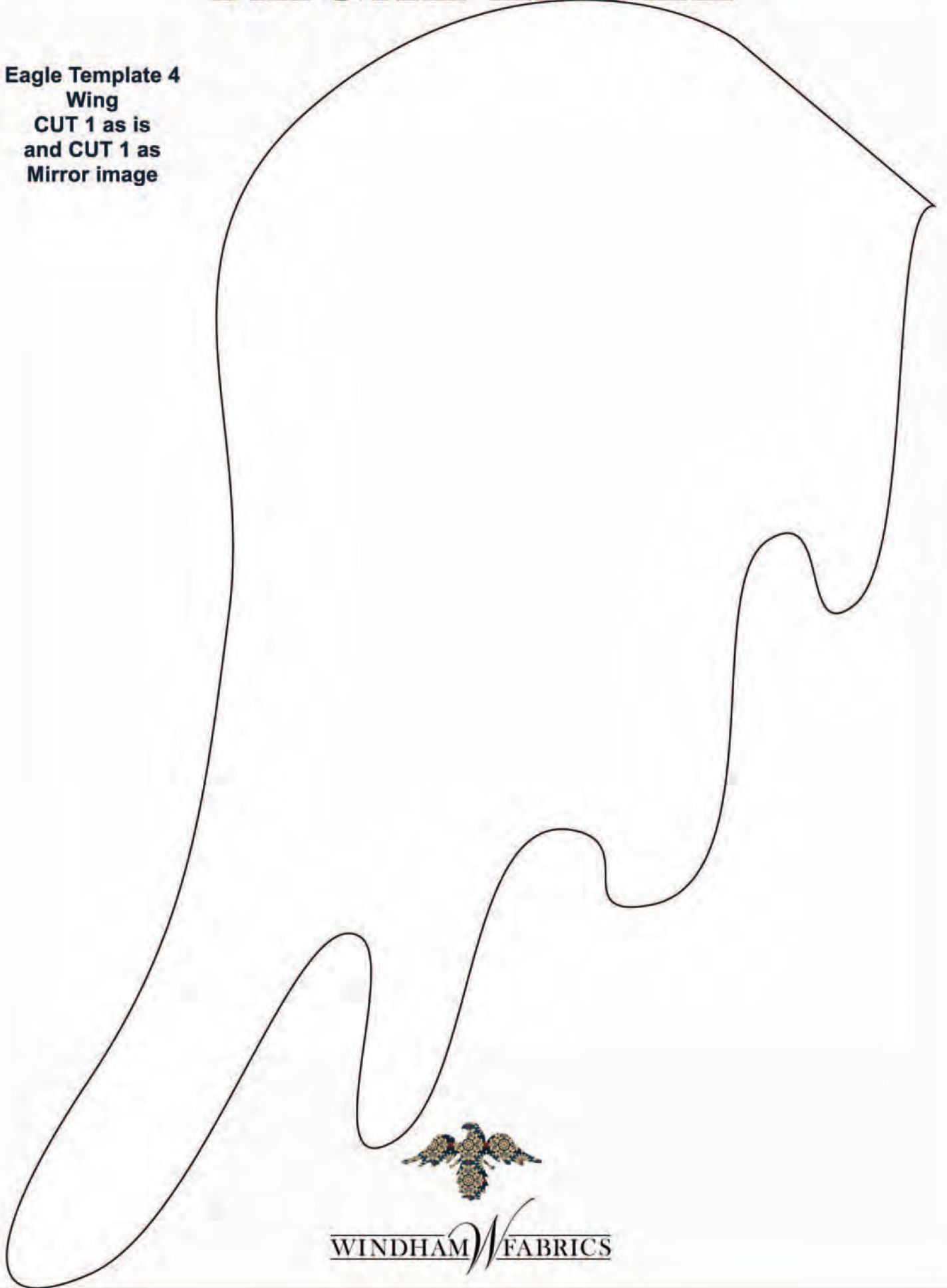
Eagle Template 1
Tail Feathers
CUT 1



WINDHAM FABRICS

“REGAL EAGLE”

**Eagle Template 4
Wing
CUT 1 as is
and CUT 1 as
Mirror image**



WINDHAM FABRICS